

PRESS RELEASE

EVERLIGHT Releases VS-FI3535 Series for Face Recognition Solutions in Automotive Environments

Shulin, New Taipei City - Sep 23, 2019 –EVERLIGHT ELECTRONICS CO., LTD. 【TSE:2393】 , a leading player in the global LED and optoelectronics industry, releases three new infrared products that support the smart automation of automotive devices to make our lives more convenient.

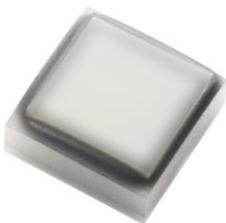
The VS-FI3535 LED Series is suitable for driver facial recognition. The ALS-DPDIC17 LED Series can be used for automatic dimming of rear view mirrors and dashboard lights. The IR12-21C/TR8-AM LED, paired with the PD12-21C/TR8-AM, provides improved accuracy and sensitivity in touch screens. EVERLIGHT is committed to developing more products with smarter solutions.

A major development trend is innovation to create even more intelligent and smart automobiles. In terms of focus and attention of a driver, EVERLIGHT's VS-FI3535 LED Series can perceive the driver's eyes and facial expressions to easily identify gaze focus, daze or distraction. The VS-FI3535-D110-85/L2-W0940/TR8-AM (2.8W, 3.5 x 3.5 x 1.6mm) has a wavelength of 940nm and an emitting angle of 110° x 85°. The wavelength shift over temperature is 0.07nm/K, the operating temperature is -40°C~+105°C. It has quick response time as well as qualification based on guidelines of AEC-Q102. Differing in divergence regarding target detection and efficiency from regular LED and EEL, the VS-FI3535 Series combines the quality and safety which sums up to be the best choice for driver facial recognition applications.

The ALS-DPDIC17 Series is optical sensing components with a dimension of 2.0x2.0x0.63mm, resolution of 16bits, operating current of 160mA and sensing luminance of 0.0033 to 83,000lx. Not only can it be used for adjusting the reflected light on the rear and side mirrors, but also for dashboard light dimming.

The IR opto-sensors 12-21C/TR8-AM and PD12-21C/TR8-AM are used to sense touch in any condition. Even when wearing gloves to click the automotive touchscreen, it can be easily read without interference to quickly and accurately sense the signals on the screen, delivering more flexibility to the user.

Everlight has been delivering professional development expertise of over 36 years by combine our R&D, business and marketing teams to continuously seek the innovation and breakthrough on package technology and quality control.

Product Photo(s):

VS-FI3535 Series is used for driver facial recognition, making driving safer and more convenient.

Source: EVERLIGHT ELECTRONICS CO., LTD

About EVERLIGHT Electronics Co. Ltd.

EVERLIGHT Electronics Co., Ltd. was founded in 1983 in Taipei, Taiwan. Led by Chairman Robert Yeh. EVERLIGHT has over 36 years of R&D experience for reliable capability. With global operations for customer service and an excellent brand reputation, EVERLIGHT has been ranked in the top four LED manufacturers in this competitive LED market. Our products are manufactured in-house to guarantee maximum quality and service. EVERLIGHT provides the most diversified product portfolio consisting of Low Power LEDs to Ultra High Power LEDs, Through-hole LEDs to SMD LEDs, LED Lighting Modules, Digital Displays, Optocouplers and Infrared Emitters and Sensors, and many other LEDs for the Lighting, TFT, Automotive, Signage, and Consumer markets. Today, EVERLIGHT is a global company with over 6,400 employees based throughout China, Hong Kong, Japan, Korea, Singapore, Malaysia, India, Germany and U.S.A. Please visit us at www.EVERLIGHT.com / PR Contact: pr@everlight.com