

## PRESS RELEASE

Light+Building, March 18-23 2018, Booth: Hall 6.2 A40

**EVERLIGHT to Demonstrate High-efficiency and Horticulture Lighting Products at Light+Building 2018**

**Shulin, New Taipei City – Mar. 16, 2018** – EVERLIGHT ELECTRONICS CO., LTD. 【TSE:2393】, a leading player in the global LED and optoelectronics industry, will demonstrate its 5630X-ELB LED series and horticulture fit LEDs as well as all lighting and lighting-related products, such as luminaires for horticulture and fish lighting, at Light+Building 2018 in Frankfurt, Germany. You are welcome to visit our booth (Hall 6.2 A40).

EVERLIGHT's 5630X-ELB series not only boasts 228lm/W (@65mA 5000K CRI>80), but also meets DLC4.0 with a light-on test / light-on tests in the high temperature range (105°C), L90>36,000 hours and achieves/features a color tolerance less than 3SDCM. Thus, the 5630X-ELB series combines the advantages of luminous efficacy and stability to provide best lighting solutions for commercial, professional and industrial applications.

**Horticulture Lighting**

Monochromatic light LEDs are widely applied for horticulture lighting, by combining colors to effectively meet the requirements of specific spectra and optical functions. EVERLIGHT developed a special series of products based on monochromatic light wavelength to cover PAR 450nm~745nm from high to low power with SHWO 3535-ELB, 3030-ELB and 2835-ELB.

The new 2835 PC Red-ELB (2.8x3.5x0.7mm) with 5% blue intensity (CCT) can achieve a WPE of 35% (0.5W) to simultaneously replace Royal Blue & Deep Red with a luminous efficacy of 15lm. The new 3535-ELB series (3.5 x 3.5 x 2.03mm) owns the advantages of high luminous efficacy, price-performance ratio and a WPE of 65%. In all colors, the products are tested to meet LM80 and effectively guarantee to meet the customer's requirements.

Assembling the 3535-ELB series as horticulture and fish lighting luminaire [horticulture luminaire and for fish lighting purposes] will be specially demonstrated at our booth 6.2 A40. In addition, EVERLIGHT also supplies various horticulture LEDs in all forms to meet the demands in different environments, with the goal of maximizing livestock and plant stock growth and achieve targeted energy-saving objectives.

EVERLIGHT combined the R&D, business, and marketing teams to continuously pursue innovation and breakthroughs in package technology. Supplying customers with lighting products from full power to monochromatic light (full color) and special applications includes different LED properties such in terms of high luminous efficacy, dimension, price-performance ratio, heat dissipation and wavelength. The goal is to meet all demands based on the strict production and quality control as well as provide perfect solutions for customers.

If you need more information or product specifications, please contact our local office. For the information on local business, please visit our official website: [www.everlight.com](http://www.everlight.com).

Exhibition : Light+Building 2018

Date : 2018/3/18-3/23

Time : 09:00-18:00 (3/23 until 17:00)

Venue : Messe Frankfurt Fair Ground - Germany

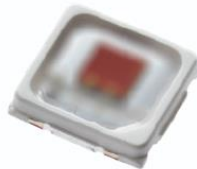
Booth Number : Hall 6.2 A40



5630X-ELB



3535-ELB Horti



3030-ELB Horti



2835-ELB Horti

#### About EVERLIGHT Electronics Co. Ltd.

EVERLIGHT Electronics Co., Ltd. was founded in 1983 in Taipei, Taiwan. Led by Chairman Robert Yeh. EVERLIGHT has over 35 years of R&D experience for reliable capability. With global operations for customer service and an excellent brand reputation, EVERLIGHT has been ranked in the top four LED manufacturers in this competitive LED market. Our products are manufactured in-house to guarantee maximum quality and service. EVERLIGHT provides the most diversified product portfolio consisting of Low Power LEDs to Ultra High Power LEDs, Through-hole LEDs to SMD LEDs, LED Lighting Modules, Digital Displays, Optocouplers and Infrared Emitters and Sensors, and many other LEDs for the Lighting, TFT, Automotive, Signage, and Consumer markets. Today, EVERLIGHT is a global company with over 6,400 employees based throughout China, Hong Kong, Japan, Korea, Singapore, Malaysia, India, Germany and U.S.A. Please visit us at [www.EVERLIGHT.com](http://www.EVERLIGHT.com) / PR Contact: [pr@everlight.com](mailto:pr@everlight.com)

#### Company contact Europe:

EVERLIGHT Electronics Europe GmbH  
Siemensallee 84, Building 7302, 5th floor  
D-76187 Karlsruhe/Germany  
Phone: +49 (0)721 824 – 473  
[info@everlight-eu.de](mailto:info@everlight-eu.de)

#### Company contact USA:

EVERLIGHT Americas, Inc.  
3220 Commander Drive, Suite 100  
Carrollton, TX, 75006, USA  
Phone: +1 972.490.4008  
[salesmarketing@everlightamericas.com](mailto:salesmarketing@everlightamericas.com)

#### Agency contact:

Viviane Baltzer, Baltzer Communications.  
Sedlmayrstr. 25, D-80634 München / Germany.  
T: +49 (0)89 12392993, [viviane.baltzer@web.de](mailto:viviane.baltzer@web.de)