



MORE LIGHT FOR DIRECTION

Automotive LED

www.everlightamericas.com

EVERLIGHT
AMERICAS

ASIA**CHINA****CHINA, HONG KONG**

EVERLIGHT ELECTRONICS CO., LTD.
Units 1606-1610, 16/F., Prosperity Place,
6 Shing Yip Street, Kwun Tong, Kowloon,
Hong Kong
TEL: +852-23880602
FAX: +852-23881127, 23843092

CHINA, SHENZHEN

EVERLIGHT ELECTRONICS CO., LTD.
Room 305A、306, The third floor of The
Second building in Zone A ,Internet Industry ,
Baoyuan Road ,Bao'an District, Shenzhen,
Guangdong, China
Postcode: 518010
TEL: +86-0755-2163-8863
FAX: +86-0755-2163-8620

CHINA, GUANGZHOU

EVERLIGHT ELECTRONICS CO., LTD.
1501 15 F1.,No.266 Xi Huan Road,
Sha Tou Street, Panyu District,
Guangzhou, China
Postcode: 511400
TEL: +86-(0)20-84663392
FAX: +86-(0)20-84663372

CHINA, XIAMEN

EVERLIGHT ELECTRONICS CO., LTD
Room6A25, Xiamen Huli District
An Ling Lake Road Huijin Building
Xiamen,Fujian , China
Postcode: 361000
TEL: +86- 4006-258-289

CHINA, CHONGQING

EVERLIGHT ELECTRONICS CO., LTD
Room 21-3, Building A1, Bin Xin City ,
Yangjiaping Century ,Jiulongpo District,
Chongqing , China
Postcode: 400050
TEL: +86- 4006-258-289

CHINA, SUZHOU

EVERLIGHT ELECTRONICS CO., LTD.
Room 306-308, Block 1, Runjie Square, No. 9,
Road Dengwei, Suzhou (SND), Jiang Su, China
Postcode: 215011
TEL: +86-(0)512-68020883

CHINA, QINGDAO

EVERLIGHT ELECTRONICS CO., LTD.
Room 317 (Building Dingdu), No. 133, Rd.
Fuzhou-North, District Shibei, Qingdao,
Shandong, China
TEL: +86-532-8091-6675
FAX: +86-532-8079-7372

CHINA, TIANJIN

EVERLIGHT ELECTRONICS CO., LTD
No. Room 810, Technology Finance Building, No 32,
AnShan Road, HePing District, TianJin, China
Postcode: 300020
TEL: +86-22-26351122, 26351133

CHINA, BEIJING

EVERLIGHT ELECTRONICS CO., LTD
Room 201, Unit 2, Building 13,
Jiugong Jiahe Garden, Daxing District,
Beijing , China
Postcode: 102600
TEL: +86- 4006-258-289

KOREA

EVERLIGHT OPTOELECTRONICS
KOREA CO., LTD.
7F S706-1 Garden 5 Works Choongmin Rd 52. ,
Songpa-gu, Seoul , KOREA .
TEL: +82-2-2047-3960
FAX: +82-2-2047-3961
EMAIL: terrychoi@everlight.com

JAPAN, TOKYO

EVERLIGHT JAPAN CORPORATION
4F MITA SUN BLDG., 1-3-35 MITA,
MINATO-KU, TOKYO, 108-0073, JAPAN
TEL: +81-3-5439-9296
FAX: +81-3-5439-9288
EMAIL: elj@everlight.com

JAPAN, KYOTO

EVERLIGHT JAPAN CORPORATION
7F, MITSUISEIMEI KYOTO YAMASHINA BLDG.
46-1, TAKEHANADOUNOMAECYOU,
YAMASHINA KU, KYOTO, 607-8085, JAPAN
TEL: +81-75-584-6070
FAX: +81-75-584-6080
EMAIL: everlightjapan@everlight.com

INDIA, BANGALORE

EVERLIGHT ELECTRONICS INDIA PVT LTD
Suit No. 3, 2nd Floor
Alpha Block. Sigma Soft Tech Park.
Varthur Kodi. Whitefield Main Road.
Bangalore: 560066
TEL: +91-080-41633111, +91-080-41623111
FAX: +91-080-41622111
EMAIL: salesindia@everlight.com

INDIA, DELHI

EVERLIGHT ELECTRONICS INDIA PRIVATE LTD.
Regus Green Boulevard
Level-5, Tower C, 3C Green Boulevard, Block B,
Sec-62, Noida:201301
TEL: +91-120-6608019
MOBEL: +91-981-1831442
EMAIL: anuj@everlight.com

MALAYSIA

EVERLIGHT OPTOELECTRONICS(M) SDN BHD
B-04-20 Krystal Point,
303 Jalan Sultan Azlan Shah,
11900 Penang, Malaysia
TEL: +60-4-646-4233
FAX: +60-4-646-5233
EMAIL: inquiry@everlight-pg.com.my

SINGAPORE

EVERLIGHT ELECTRONICS SINGAPORE PTE LTD
50 Tagore Lane , #04-11D,
Entrepreneur Centre, Singapore 787494.
TEL: +65-6511-2965
FAX: +65-6338-5486
EMAIL: contact@everlight.com.sg

AMERICA**TEXAS USA**

EVERLIGHT AMERICAS INC.
3220 Commander Drive, Suite 100
Carrollton, Texas, 75006, United States
TEL: +1-972-490-4008
FAX: +1-972-490-5009
EMAIL: salesmarketing@everlightamericas.com

CALIFORNIA USA

EVERLIGHT AMERICAS INC.
3280 E Guasti Road, Suite 200
Ontario, California 91761, United States
TEL: +1-909-937-6070
FAX: +1-909-937-7619
EMAIL: salesmarketing@everlightamericas.com

EUROPE**GERMANY, HQ**

EVERLIGHT ELECTRONICS EUROPE GMBH
Siemensallee 84, Building 7302, 5F
76187 Karlsruhe, Germany
TEL: +49-721-82447-3
FAX: +49-721-82447-40
EMAIL: info@everlight-eu.de

GERMANY, MUNICH

EVERLIGHT ELECTRONICS EUROPE GMBH
Rote-Kreuz-Strasse 8, D-85737 Ismaning, Germany
TEL: +49-89-9400336-0
FAX: +49-89-9400336-29
EMAIL: info@everlight-eu.de

全国免费电话 : 400-6258-289

邮箱 : china@everlight.com

HEADQUARTERS

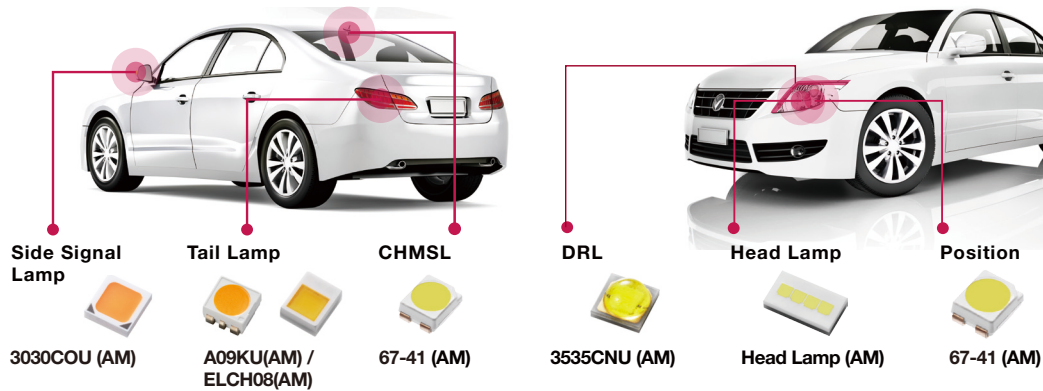
No. 6-8, Zhonghua Rd., Shulin Dist., New Taipei City, Taiwan 23860
TEL: +886-2-2685-6688 FAX: +886-2-2685-6699

www.everlight.com

Introduction of automotive components for exterior application

EVERLIGHT provides lighting components for exterior application to be driven by the need for energy efficiency, automobile styling, and the introduction of new power technologies. We tend to focus on the efficiency, reliability, low working temperature in our components to fit in the automotive market segments. EVERLIGHT is continuously putting effort in new innovation for exterior components to fulfill customer aspects.

Your source of information: enter www.everlightamericas.com for all advanced EVERLIGHT optoelectronic products and updated specifications.



Qualification: According to AEC-Q101
MSL Level 1 based on JEDEC J-STD-020



Head lamp 2 chip components	
Product Type	Head Lamp
Package	2 chips
Dimension LxWxH mm	3.7x2.93x0.99 mm
Light Color	W
Max Current	1200mA
Brightness Intensity (mcd)	450~700lm @ 1000mA
Application	Head Lamp
Features	RoHS Compliant
	Ceramic package
	ESD Protection 15KV
	Topr= -40~125°C
	View angle 120°

Structure and material depend on customer request.

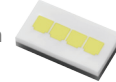
Qualification: According to AEC-Q101
MSL Level 1 based on JEDEC J-STD-020



Head lamp 3 chip components	
Product Type	Head Lamp
Package	3 chips
Dimension LxWxH mm	4.28x2.93x0.99 mm
Light Color	W
Max Current	1200mA
Brightness Intensity (mcd)	600~1100lm @ 1000mA
Application	Head Lamp
Features	RoHS Compliant
	Ceramic package
	ESD Protection 15KV
	Topr= -40~125°C
	View angle 120°

Structure and material depend on customer request.

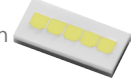
Qualification: According to AEC-Q101
MSL Level 1 based on JEDEC J-STD-020



Head lamp 4 chip components	
Product Type	Head Lamp
Package	4 chips
Dimension LxWxH mm	5.37x2.93x0.99 mm
Light Color	W
Max Current	1200mA
Brightness Intensity (mcd)	1000~1500lm @ 1000mA
Application	Head Lamp
Features	RoHS Compliant
	Ceramic package
	ESD Protection 15KV
	Topr= -40~125°C
	View angle 120°

Structure and material depend on customer request.

Qualification: According to AEC-Q101
MSL Level 1 based on JEDEC J-STD-020



Head lamp 5 chip components	
Product Type	Head Lamp
Package	5 chips
Dimension LxWxH mm	6.45x2.93x0.99 mm
Light Color	W
Max Current	1200mA
Brightness Intensity (mcd)	1100~1800lm @ 1000mA
Application	Head Lamp
Features	RoHS Compliant
	Ceramic package
	ESD Protection 15KV
	Topr= -40~125°C
	View angle 120°

Structure and material depend on customer request.

Qualification: According to AEC-Q101
MSL Level 1 based on JEDEC J-STD-020



3535CNU (AM)	
Product Type	Ceramic
Package	3535
Dimension LxWxH mm	3.5x3.3x2.3 mm
Light Color	W/R/Amber
Max Current	1000mA
Brightness Intensity (mcd)	W: 90~140lm@350mA R: 60~80lm@350mA Amber: 60~90lm@350mA
Application	DRL Fog Lamp Stop Lamp Turning Light
Features	RoHS Compliant
	Ceramic package
	ESD Protection 8KV
	Topr= -40~130°C View angle 120°

Structure and material depend on customer request.

Qualification: According to AEC-Q101
MSL Level 1 based on JEDEC J-STD-020



ELCH08 (AM)	
Product Type	Ceramic
Package	2016
Dimension LxWxH mm	2.04x1.64x0.75 mm
Light Color	W/R/Amber
Max Current	700mA
Brightness Intensity (mcd)	W: 160~225lm@700mA R: 60~130lm@700mA Amber: 100~180lm@700mA
Application	DRL Fog Lamp Stop Lamp Turning Light
Features	RoHS Compliant
	Ceramic package
	ESD Protection 8KV
	Topr= -40~115°C View angle 120°

Structure and material depend on customer request.

Qualification: According to AEC-Q101
MSL Level 2a based on JEDEC J-STD-020



3030COU (AM)	
Product Type	Ceramic
Package	3030
Dimension LxWxH mm	3.0x3.0x0.63 mm
Light Color	W/R/Amber
Max Current	700mA
Brightness Intensity (mcd)	W: 100~160lm@350mA R: 39~70lm@350mA Amber: 52~100lm@350mA
Application	DRL Fog Lamp Stop Lamp Turning Light
Features	RoHS Compliant
	Ceramic package
	ESD Protection 8KV
	Topr= -40~100°C View angle 120°

Structure and material depend on customer request.

Top view PLCC4
Qualification according to AEC-Q101
Precondition: Level 3 based on JEDEC J-STD-020D



67-41 (AM)	
Product Type	PLCC
Package	3528
Dimension LxWxH mm	3.5x2.8x1.65 mm
Light Color	W/R/Y
Max Current	70mA
Brightness Intensity (mcd)	W: 2240~5600mcd@30mA R: 1800~4500mcd@50mA Y: 1800~4500mcd@50mA
Application	Turning Light Stop Lamp
Features	RoHS Compliant
	PLCC-4 package
	ESD Protection 2KV
	Topr= -40~100°C View angle 120°

Structure and material depend on customer request.



Maximizing lifecycles with maximum respect for the cycle of life.



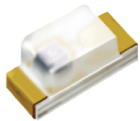
Top view LED
Qualification: According to AEC-Q101
MSL Level 3 based on JEDEC J-STD-020



17-21 (AM)

Product Type	Chip LED
Package	0805
Dimension LxWxH mm	2.0x1.25x0.8 mm
Light Color	R/G/Y
Driving Current	20mA
Brightness Intensity (mcd)	R: 112-280 G: 18-45 Y: 90-224
Application	Car Infotainment Dashboard Switch indicators
Features	RoHS compliant
	Chip LED package
	ESD protection 2KV
	Topr -40~+100°C
	View angle 130°

Structure and material depend on customer request.



Top view LED
Qualification: According to AEC-Q101
MSL Level 3 based on JEDEC J-STD-020

19-21 (AM)

Product Type	Chip LED
Package	0603
Dimension LxWxH mm	1.6x0.8x0.6 mm
Light Color	R/G/Y
Driving Current	20mA
Brightness Intensity (mcd)	R: 140-280 G: 56-112 Y: 180-355
Application	Car Infotainment Dashboard Switch indicators
Features	RoHS compliant
	Chip LED package
	ESD protection 2KV
	Topr -40~+100°C
	View angle 120°

Structure and material depend on customer request.



Side view PLCC-2
Qualification according to AEC-Q101
MSL Level 3 based on JEDEC J-STD-020D

57-21 (AM)

Product Type	PLCC
Package	Side view
Dimension LxWxH mm	4.0x4.0x3.6 mm
Light Color	R/G/B/Y/IceBlue/W
Driving Current	20mA
Brightness Intensity (mcd)	R: 710~1400 G: 560~900 B: 224~560 Y: 1120~2240 IceBlue: 1120~2240 W: 1120~2800
Application	Car Infotainment Dashboard Switch indicators LCD back Lighting(GPS, DVD Player) Ambient Lighting
Features	RoHS Compliant
	PLCC-2 package
	ESD Protection 2KV
	Topr -40~+100°C
	View angle 120°

Structure and material depend on customer request.

Introduction of automotive components for Interior application

EVERLIGHT provides lighting components for interior application to deliver lighting that works beautifully and cost effectively. We tend to design a unique LED light that uses far less energy with colors best enhance your vehicle brand identity to attract consumer attention and enhance overall appearance of the car. EVERLIGHT interior ambient components can give you the right mood at any time and also make night driving safer by illuminating controls and storage areas.

Your source of information: enter www.everlightamericas.com for all advanced EVERLIGHT optoelectronic products and updated specifications.

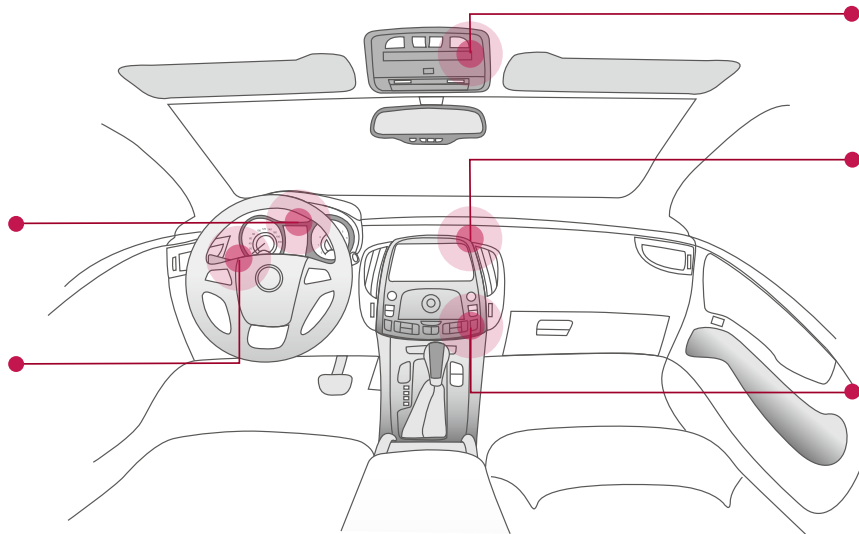
Small package with low brightness

PLCC / Chip LED Package

Midsize package with high brightness

Chip LED 0805
17-21 (AM)

Chip LED 0603
19-21 (AM)



PLCC-2 5630
62-117 (AM)

PLCC-2 3020
45-11 (AM)

PLCC-2 2214
65-21 (AM)



Maximizing lifecycles with maximum respect for the cycle of life.



Top view
Qualification according to AEC-Q101
MSL: Level 3 based on JEDEC J-STD-020D



Top view PLCC-2
Qualification according to AEC-Q101
MSL Level 3 based on JEDEC J-STD-020D

62-117B (AM)

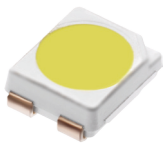
Product Type	High Power LED
Package	5630
Dimension LxWxH mm	5.6x3.0x0.95
Light Color	White
Driving Current	100mA
Brightness Intensity (mcd)	White:9000~28000mcd
Application	Interior Lighting Reading Light
Features	RoHS Compliant
	Silver Plated Lead Frame
	ESD Protection
	Topr -40~+100°C
	View angle 120°

Structure and material depend on customer request.

65-21 (AM)

Product Type	PLCC
Package	2214
Dimension LxWxH mm	2.2x1.4x1.3 mm
Light Color	R/G/B/Y/SkyBlue/IceBlue/W
Driving Current	20mA
Brightness Intensity (mcd)	R:90-224 G:710-1400 B:140-280 Y:112-280 SkyBlue:112-280 IceBlue:1120-2240 W:900-1800
Application	Car Infotainment Dashboard Switch indicators LCD Back Lighting (GPS, DVD player) Ambient Lighting
Features	Gold Plated Lead Frame
	PLCC-2 package
	ESD protection 2KV
	Topr -40~+100°C
	View angle 120°

Structure and material depend on customer request.



Top view PLCC-4
Qualification according to AEC-Q101
MSL: Level 3 based on JEDEC J-STD-020D

67-41 (AM)

Product Type	PLCC
Package	3528
Dimension LxWxH mm	3.5x2.8x1.65
Light Color	W/R/Y
Driving Current	70mA
Brightness Intensity (mcd)	W: 2240~5600mcd@30mA R:1800~4500mcd@50mA Y:1800~4500mcd@50mA
Application	Switch indicators Dashboard
Features	Gold Plated Lead Frame
	PLCC-4 package
	ESD Protection 2KV
	Topr= -40~100°C
	View angle 120°

Structure and material depend on customer request.

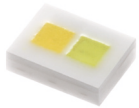


Top view PLCC-6
Qualification according to AEC-Q101
MSL: Level 3 based on JEDEC J-STD-020D

67-63 (AM)

Product Type	PLCC
Package	3528
Dimension LxWxH mm	3.5x2.8x1.4
Light Color	RGB
Driving Current	20mA
Brightness Intensity (mcd)	R: 560~1120 G: 1120~2240 B: 180~560
Application	Switch indicators LCD Back Lighting (GPS, DVD player) Ambient Lighting
Features	Gold Plated Lead Frame
	PLCC-6 package
	ESD Protection 2KV
	Topr= -40~100°C
	View angle 120°

Structure and material depend on customer request.

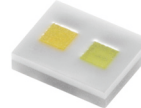


Top view
Qualification according to AEC-Q101
MSL: Level 1 based on JEDEC J-STD-020D

1216-DC

Product Type	High Power LED
Package	1216
Dimension LxWxH mm	1.6x1.2x0.7
Light Color	Warm/Cool White (Dual color)
Driving Current	80mA@chip
Brightness Intensity (mcd)	Warm white:20lm@80mA Cool white:20lm@80mA
Application	Interior Lighting Ambient Lighting
Features	Gold Plated Lead Frame
	Dual Color
	Ceramic
	ESD Protection
	View angle 120°

Structure and material depend on customer request.



Top view
Qualification according to AEC-Q101
MSL: Level 1 based on JEDEC J-STD-020D

2016-DC

Product Type	High Power LED
Package	2016
Dimension LxWxH mm	2.04x1.64x0.75
Light Color	Warm/Cool White (Dual color)
Driving Current	80mA@chip
Brightness Intensity (mcd)	Warm white:20lm@80mA Cool white:20lm@80mA
Application	Interior Lighting Ambient Lighting
Features	Gold Plated Lead Frame
	Dual Color
	Ceramic
	ESD Protection
	View angle 120°

Structure and material depend on customer request.